



# Textile Technique |



INTERLOCK / SELVAGE

INTERLOCK in satin, canvas and flannel

TEXTILE TECHNIQUE



INTERLOCK in canvas  
installation in herringbone



TEXTILE TECHNIQUE



SELVAGE in satin-lemon / installation in brick

Lemon Freeze  
2025-50

wall color by Benjamin Moore



TEXTILE TECHNIQUE

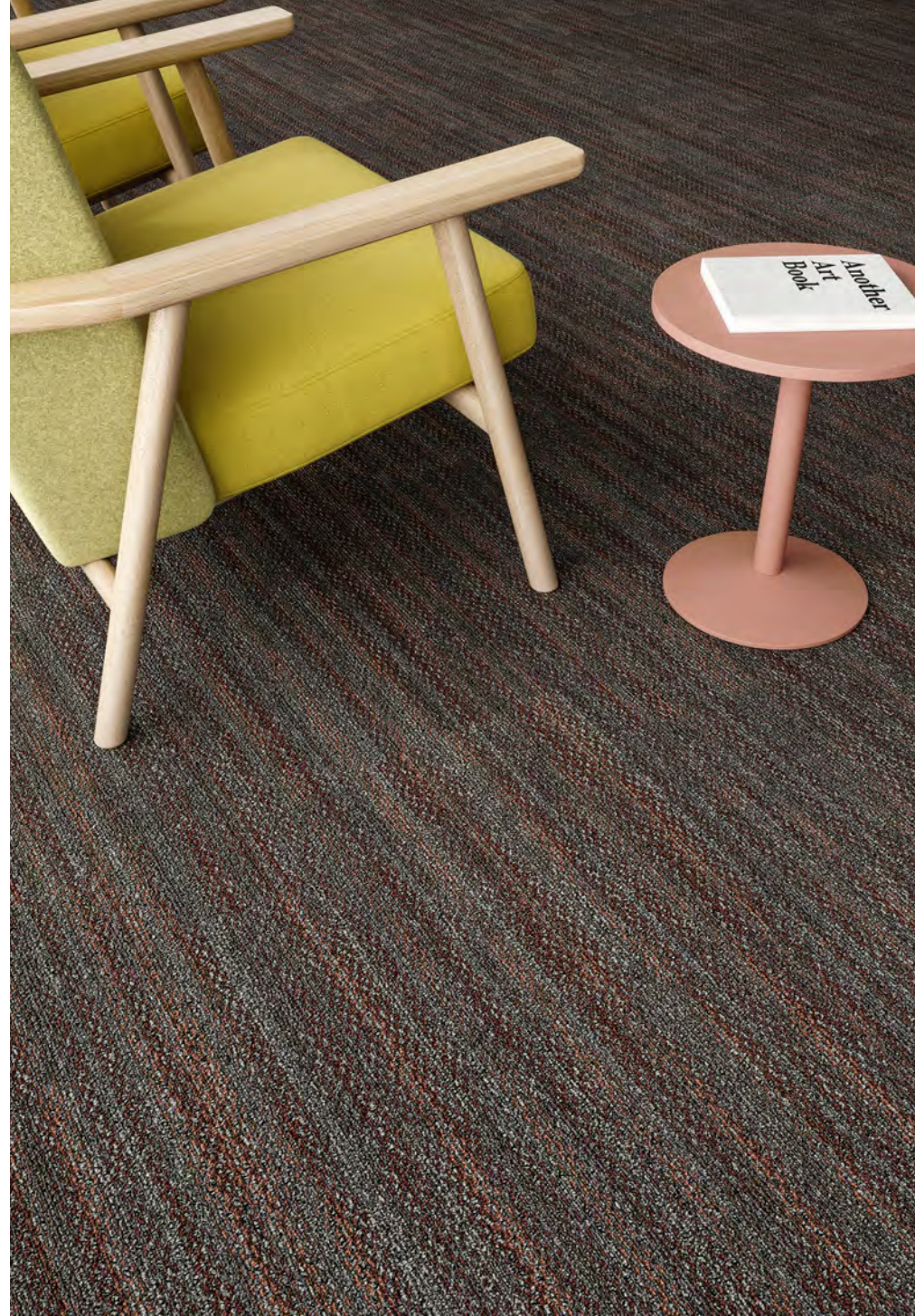


INTERLOCK & SELVAGE in flannel / installation in stagger

TEXTILE TECHNIQUE



INTERLOCK in flannel / installation in stagger

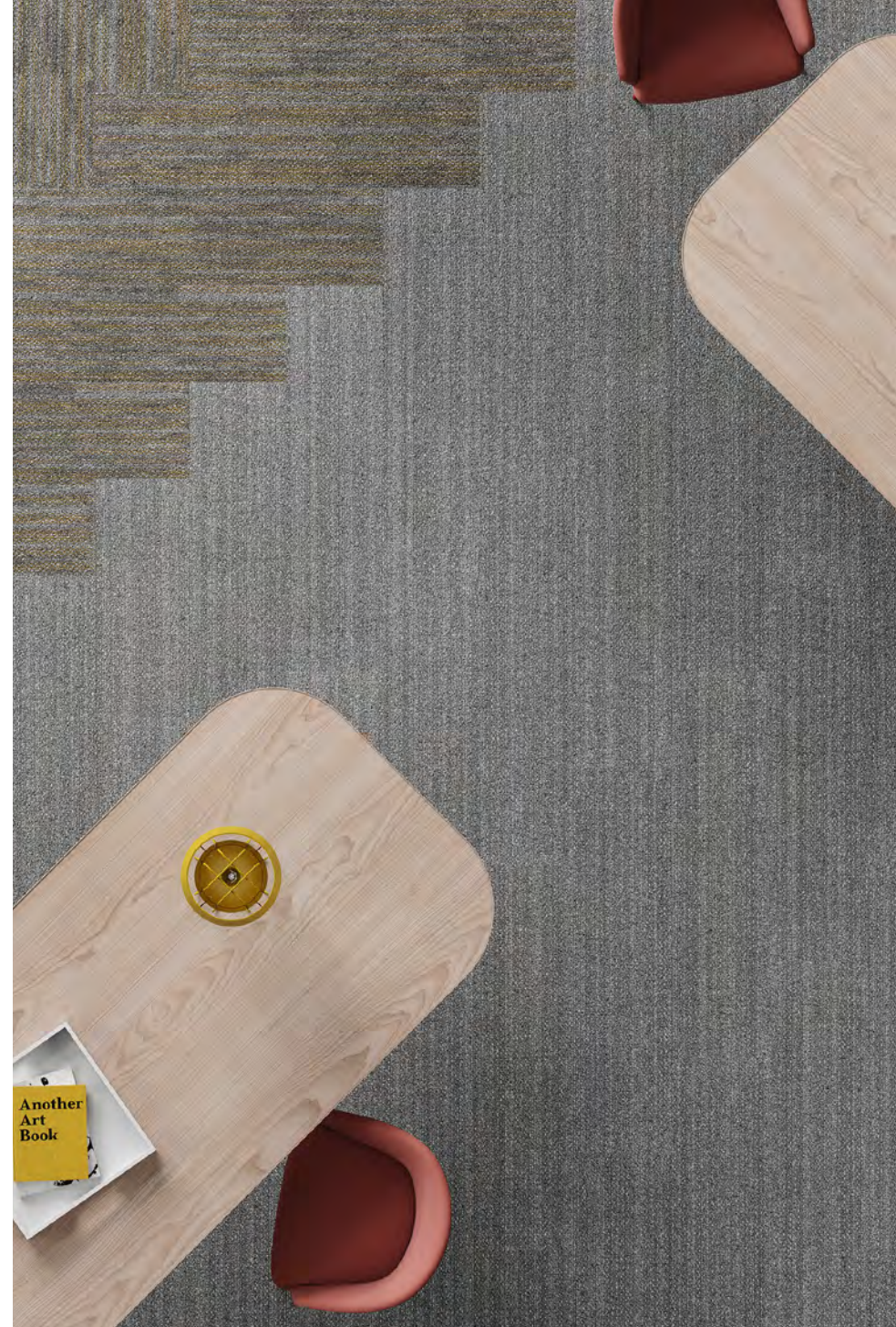


SELVAGE in linen-rose / installation in stagger



## CARBON NEUTRAL

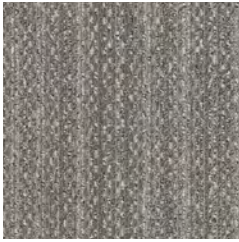
New EcoSolution Q100™ yarn +  
EcoWorx® backing = lower, overall embodied  
carbon footprint





SELVAGE in linen and linen-rose  
installation in stagger

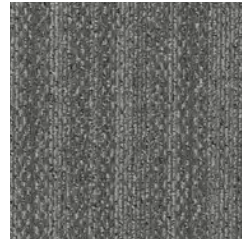
COLORWAYS 10583 | INTERLOCK



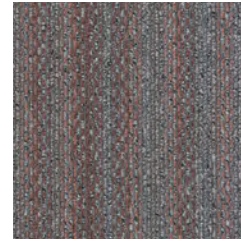
00100 suede



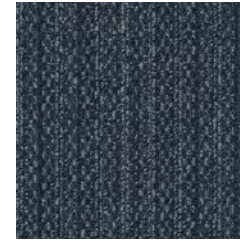
00101 suede-bronze



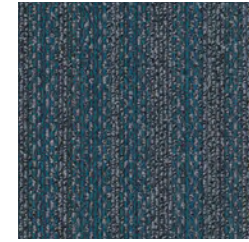
00150 linen



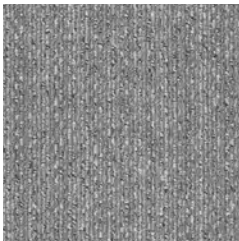
00151 linen-rose



00450 denim



00451 denim-blue



00500 satin



00501 satin-lemon



00550 canvas



00551 canvas-green



00575 flannel



00576 flannel-azure



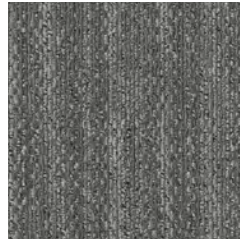
COLORWAYS 10584 | SELVAGE



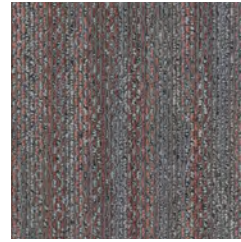
00100 suede



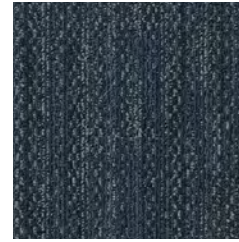
00101 suede-bronze



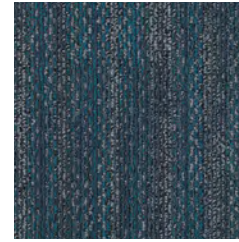
00150 linen



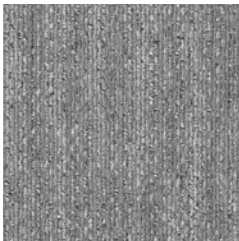
00151 linen-rose



00450 denim



00451 denim-blue



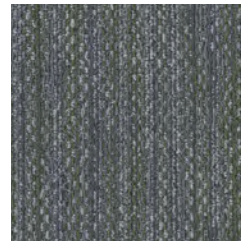
00500 satin



00501 satin-lemon



00550 canvas



00551 canvas-green



00575 flannel



00576 flannel-azure

## PRODUCT SPECIFICATIONS

TEXTILE TECHNIQUE | modular

### INTERLOCK

style / I0583

product size	12" x 48"   30.48 cm x 121.92 cm
gauge	1/10   39.37 per 10cm
tufted yarn weight	19 oz./yd <sup>2</sup>   644.23 g/m <sup>2</sup>
stitches	10.8 per inch   42.65 per 10 cm
fiber type	Eco Solution Q <sup>®</sup> Nylon
backing type	EcoWorx <sup>®</sup> Tile

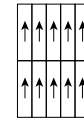
### SELVAGE

style / I0584

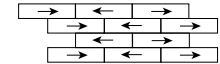
product size	12" x 48"   30.48 cm x 121.92 cm
gauge	1/10   39.37 per 10cm
tufted yarn weight	19 oz./yd <sup>2</sup>   644.23 g/m <sup>2</sup>
stitches	10.8 per inch   42.65 per 10 cm
fiber type	Eco Solution Q <sup>®</sup> Nylon
backing type	EcoWorx <sup>®</sup> Tile

## INSTALLATION METHODS

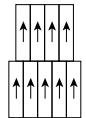
MONOLITHIC



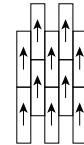
BRICK



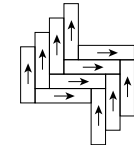
OFFSET



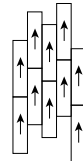
ASHLAR



HERRINGBONE



STAGGER



For full specifications and color, please [visit this collection on the website.](#)

INTERLOCK in satin, canvas and flannel  
installation in monolithic