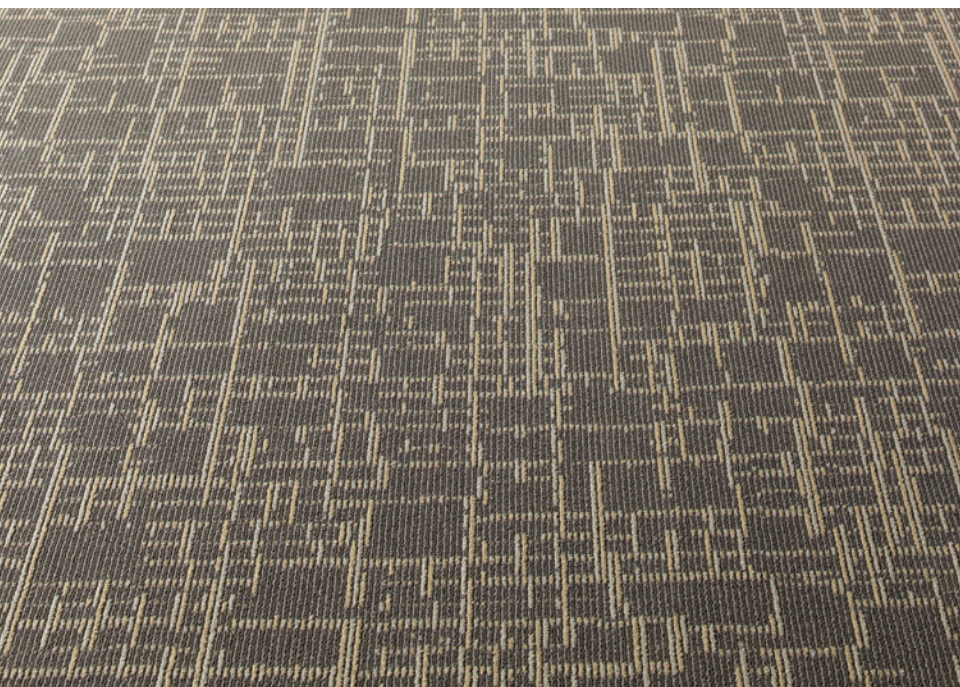




patcraft

ECOWORX[®] PERFORMANCE BROADLOOM



PERFORMANCE EQUALS FLEXIBILITY.

Because we know durability and longevity are important to you, we took the performance benefits of our EcoWorx® tile backing and made something much bigger. EcoWorx® Performance Broadloom, the industry's first 100% sustainable, non-PVC, moisture barrier backing system brings the proven-performance and durability of the EcoWorx backing technology to the much larger broadloom market.

Ecoworx Performance Broadloom is designed to perform in even the toughest environments...and to look beautiful doing it. Durable construction and extreme performance meets beautiful design.

- Performance backing with non-flow-through characteristics provides a complete moisture barrier and passes the 10,000 impact test
- Impermeable to moisture greatly reducing wick-back of stains
- Increased pattern flexibility compared to standard six foot structured backing
- Stronger, five times the tensile strength of PVC
- Delamination strength 10-times stronger than backing used on traditional broadloom commercial carpet products (exceeds 20 pounds)
- Forty percent lighter for lower shipping costs and easier handling
- Passes the AATCC 174 Antimicrobial Test when installed with Shaw's 3600 adhesive
- Extremely low in VOC's exceeding the protocols for Green Label Plus certification under CRI's Indoor Air Quality Program
- Comes with Shaw's standard Environmental Guarantee, which states that Shaw will pick up the EcoWorx material (must be a minimum of 500 square yards) and return it to the mill for recycling at no charge to the customer, regardless of future orders
- Contributes to an Innovation in Design point through the U.S. Green Building Council's LEED® Green Building Rating System™

patcraft.com **800.241.4014**