

shadowgraph el

Product Specifications

Collection Name	Time Exposures	
Style Number	GY393	
Product Type	Modular	
Construction	Multi-Level Pattern Cut/Loop	
Fiber Type	Eco Solution Q® SD Nylon	
Dye Method	100% Solution Dyed	
	English	Metric
Gauge	1/12	47.24 per 10 cm
Stitches Per Inch	10.5	41.34 per 10 cm
Tufted Pile Height	3/32" low - 7/32" high	2.38mm - 5.56mm
Tufted Yarn Weight	25.0 oz	847.64 g/m ²
Finished Pile Thickness	0.116	2.95 mm
Product Size	9" x 36"	22.86 cm x 91.44 cm
Density	7759	14.45 kilotex
Protective Treatments	SSP® Shaw Soil Protection	
Primary Backing	Non-Woven Synthetic	
Secondary Backing	EcoLogix®	

Performance Specifications

Traffic Class	Heavy (TARR)
Antimicrobial Assessment	Passes (AATCC-174) (When installed using Shaw 1036 adhesive)
Methanamine Pill Test	Passes (DOCF-1-70)
Radiant Panel	Class I (ASTM E-648)
NBS Smoke	Less than 450 (ASTM-E-662)
Electrostatic Propensity	Less than 3.5 kV (AATCC-134)
CRI Green Label Plus	glp9968
ADA Compliance	This product meets the guidelines as set forth in the Americans with Disabilities Act for minimum static coefficient of friction of 0.6 for accessible routes.

Warranty Information

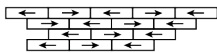
Carpet Tile Lifetime Commercial Limited Warranty for EcoLogix

Installation Methods

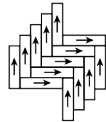
Monolithic



Brick



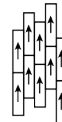
Herringbone



Ashlar



Stagger



transforming performance.



Environmental Specifications

Recyclability 100% recyclable

Materials

Ingredients

does not contain PVC, phthalates, or PBD/PBDE

Recycled Content

Total Recycled Content (by weight)	41 %
Pre-Consumer	41 %
Post-Consumer	0 %
Bio-Based/Rapidly Renewable Content (By Weight)	0 %
Packaging	100% Recyclable
Country of Origin (manufacturer)	USA

Meets or exceeds all local and national regulations in country of manufacture.

Manufactured in an ISO9001 & ISO14001 certified facility or equivalent.

Recycled content is calculated using system allocation, mass balance, and direct insertion.

The actual recycled content in this product will likely vary. For more information email info@patcraft.com.

Third Party Certifications

MBDC Cradle to Cradle	silver certified
NSF 140	gold certified
CRI Green Label Plus	glp9968
USGBC LEED	contributes
Building Research Establishment	certified
Good Environmental Choice Australia	certified

Specifications are subject to nominal manufacturing variances. Material supply and/or manufacturing processes may necessitate specification changes without notice. This carpet is an exclusive design and may not be duplicated in any manner. Use of this design in the creation of another carpet design is also strictly prohibited. Visit patcraft.com/testing for more information.