


Color Pop

Product Specifications

Collection Name	Action Planks	
Style Number	I0448	
Product Type	Modular	
Construction	Multi-Level Pattern Loop	
Fiber Type	Eco Solution Q® Nylon	
Dye Method	100% Solution Dyed	
	English	Metric
Gauge	1/10 inch	39.4 per 10cm
Stitches Per Inch	10 per inch	41 per 10cm
Tufted Pile Height	4/32" low - 6/32" high	3.18mm - 4.76mm
Tufted Yarn Weight	16.0 oz/yd2	542.5 gms/sqm
Finished Pile Thickness	0.099 inches	2.51 mm
Total Thickness	0.224 inches	5.69 mm
Product Size	12.0 X 48.0 inches	30.5 x 121.9 cm
Average Density	5818 per cu.yd.	9.13 kilotex
Square Yards per Box	5.33	
Installation Pattern Repeat	TILE	tile
Protective Treatments	SSP® Shaw Soil Protection	
Primary Backing	Non-Woven Synthetic	
Secondary Backing	EcoWorx® Tile	
GSA Approved Product	Yes	

Performance Specifications

Traffic Class	Heavy (TARR)
Antimicrobial Assessment	Passes (AATCC-174) (When installed using Shaw 5036 adhesive)
Methenamine Pill Test	Passes (DOCF-1-70)
Radiant Panel	Class I (ASTM E-648)
NBS Smoke	Less than 450 (ASTM-E-662)
Electrostatic Propensity	Less than 3.5 kV (AATCC-134)
CRI Green Label Plus	Certified GLP9968
ADA Compliance	This product meets the guidelines as set forth in the Americans with Disabilities Act for minimum static coefficient of friction of 0.6 for accessible routes.

Warranty Information

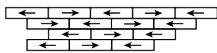
Carpet Tile Lifetime Commercial Limited Warranty

Installation Methods

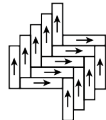
Monolithic



Brick



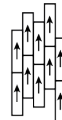
Herringbone



Ashlar



Stagger



transforming performance.



Environmental Specifications

Recyclability 100%

Materials

Ingredients

does not contain PVC, phthalates, or PBD/PBDE

Recycled Content

Total Recycled Content (by weight)	46 %
Pre-Consumer	46 %
Post-Consumer	0 %
Bio-Based/Rapidly Renewable Content (By Weight)	0 %
Packaging	100% Recyclable
Country of Origin (manufacturer)	USA

Meets or exceeds all local and national regulations in country of manufacture.

Manufactured in an ISO9001 & ISO14001 certified facility or equivalent.

Recycled content is calculated using system allocation, mass balance, and direct insertion.

The actual recycled content in this product will likely vary. For more information email info@patcraft.com.

Third Party Certifications

MBDC Cradle to Cradle	silver certified
NSF 140	gold certified
CRI Green Label Plus	Certified GLP9968
USGBC LEED	Contributes
Building Research Establishment	Certified
Good Environmental Choice Australia	Certified
Singapore Green Label	certified 039-003

Specifications are subject to nominal manufacturing variances. Material supply and/or manufacturing processes may necessitate specification changes without notice. This carpet is an exclusive design and may not be duplicated in any manner. Use of this design in the creation of another carpet design is also strictly prohibited. Visit patcraft.com/testing for more information.