





INSIDE OUT

What happens when you take an inside-out point of view? Inside-out knowledge leads to breakthroughs in sustainability. Inside-out design lets us create indoor spaces that mimic the outdoors in aesthetics, healthy materials, light, texture, flow. Inside-out products combine transparent materiality and inner beauty to engage our senses while enhancing our world. Look within these pages and you just might create the very best outlook for the future.

4

SPACE

Let's bring the outside in.

20

MATERIAL

Let's turn it all inside out.

34

COLLECTIONS

Let's explore inner beauty
for a change.

—
organic interruption
dichroic
ecosystem
walk forward





BREATH COMES FROM THE INSIDE OUT

To us, inside-out design is not just blue-sky thinking. We're making it real with the Shaw Create Centre, a living, breathing LEED Silver Certified space designed to bring even more creativity to life. You can exhale now.

INDOORSY



90%
of our time is
spent indoors

“IT’S INSPIRING, AND BEAUTIFUL
AND COLLABORATIVE. IT FEELS
DIFFERENT TO WALK IN EVERY MORNING.”

PATCRAFT ASSOCIATE / WORKPLACE INDEX



“LOVE THE BEAUTY, OPENNESS,
LIGHT, CONNECTED SPACES, OUTDOOR
SPACE. I AM VERY PROUD OF
THE SPACE WE HAVE.”

PATCRAFT ASSOCIATE / WORKPLACE INDEX



Creating
a place where
people want
to be.

WE LOOKED WITHIN TO
HAVE THE BEST OUTLOOK
FOR OUR FUTURE. FROM THE
MATERIALS USED TO HOW WE
INTERACT WITHIN THE SPACE,
THE **CREATE CENTRE** HAS
TRANSFORMED THE WAY WE
WORK. INSIDE AND OUT.

More than 75% of the regularly
occupied areas in the Create Centre
receive **natural daylight**.

The prominence of the main stair encourages **active
vertical circulation** and creates a **connected community**
atmosphere throughout the facility.

More than 90% of the regularly occupied
areas within the Create Centre have a
direct view to the exterior.

Materials with low Volatile Organic Compounds
(VOCs) such as Patcraft carpet products were selected
to contribute to indoor environmental quality for Create
Centre associates.

For **better air quality** in the workspace and throughout the
building, all janitors closets and the print room have been
separately exhausted.



INNER LIFE

**WE THINK, CREATE,
EXPLORE AND EXPERIENCE.**

And we do it all with a purpose. Our inner spaces reflect our outer desires – to solve problems, form ideas, connect, transform. Bring the outside in through texture, pattern and sustainable materials and you begin to think differently about design and the notion of sustainability itself. It's much bigger than the environment. It's also how we live, work, heal, learn and create.

beauty + design /

Nature is a healer. When you create healthcare spaces that connect people with nature, something amazing starts to happen. Wellness is contagious. That's the power of biophilic design.

01

natural light /

Let outer light within and wondrous things happen. People feel better. Optimism abounds.

02

living things /

The core of biophilic design is incorporating living flora to improve the air and soothe the soul.

03

organic aesthetics /

Let nature inform the space inside through biomimicry, images, materials and color palettes.

04

experience /

Create a natural sense of place for staff, patients and families via wayfinding, access, mobility and calming spaces.



activating the senses /

Monday is the new Friday. Workspaces that create a sense of belonging and well-being make for happier, more productive workers. Ignite the senses and inspire people to look forward to coming to work ... and maybe even hate to leave.

01

acoustic design /

Balance private and public spaces with sound-absorbing materials.

02

breathable spaces /

Open office design where air can flow, well-designed ventilation and the use of low VOC and safe materials combine to create breathable spaces.

03

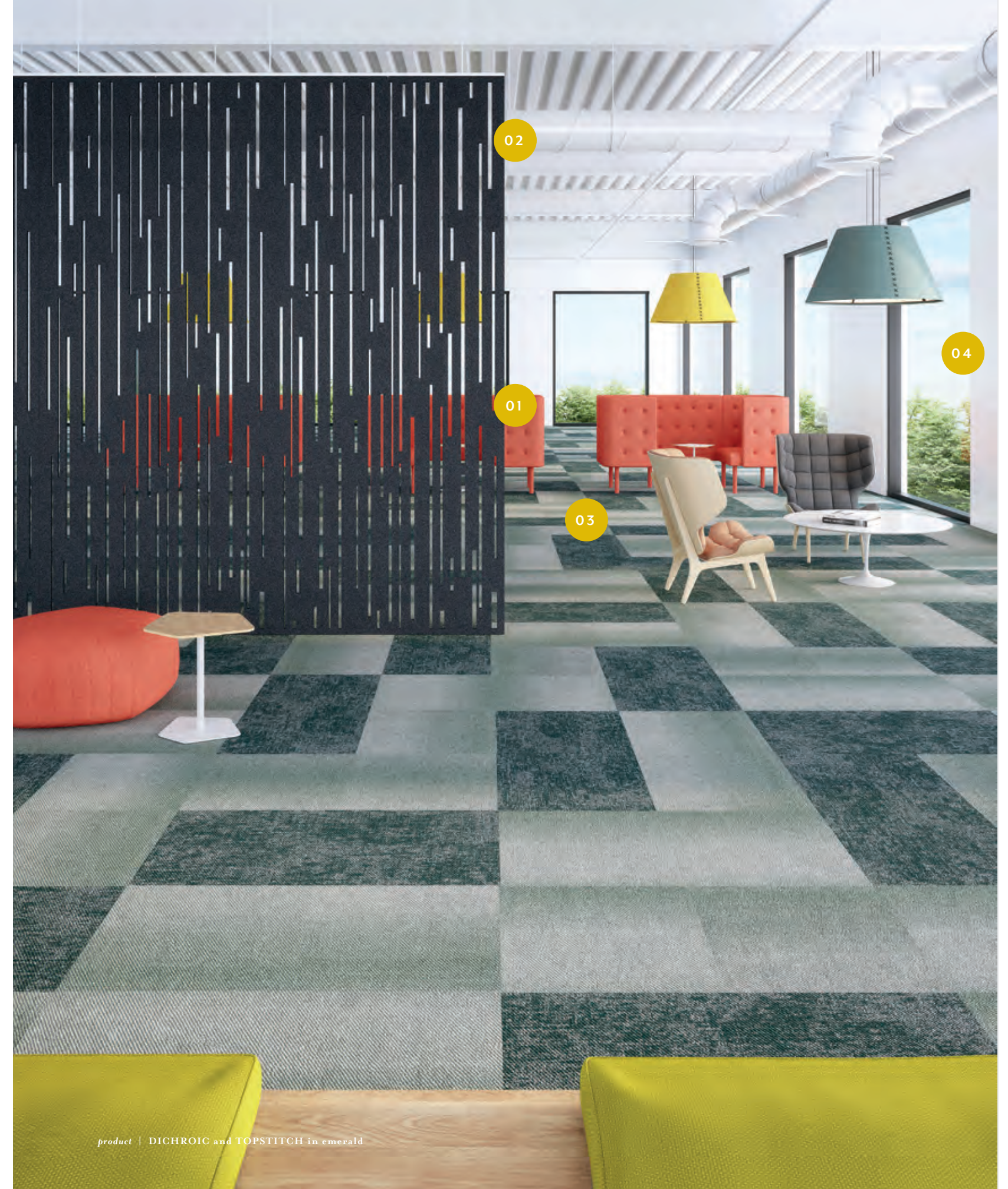
stimulating materials /

Stimulate interactivity as well as introspection through tactile materials, bright colors and communal spaces to be alone or together.

04

outward views /

Seeing the outside helps people be more productive and supports well-being, while keeping circadian rhythm in check.



human connectivity /

A study in serenity. Creating a calm atmosphere. Nurturing spaces. Places to connect. This is the key to higher learning.

01

**interactivity +
productivity /**

Design spaces to promote movement as well as closeness. Add surprising elements that inspire a sense of discovery.

02

material health /

Low VOC and safe materials. Natural whenever possible. All so young learners can fully and safely engage with their surroundings.

03

natural light /

Attention spans expand. Performance improves. Spirits soar. All because you let the sunshine in.



product | LINEAR TENSION in rust and bark



STILL LIFE | *PET staple fiber*



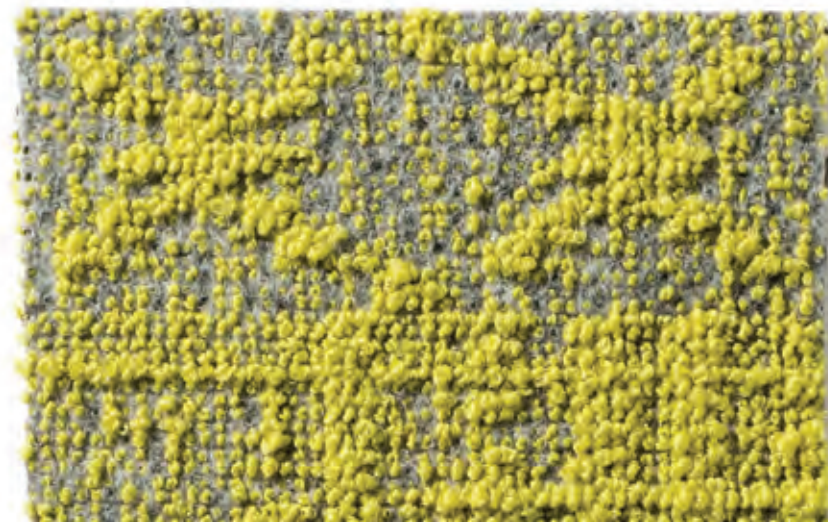
INGREDIENTS

Crushed PET bottles + PET staple fiber

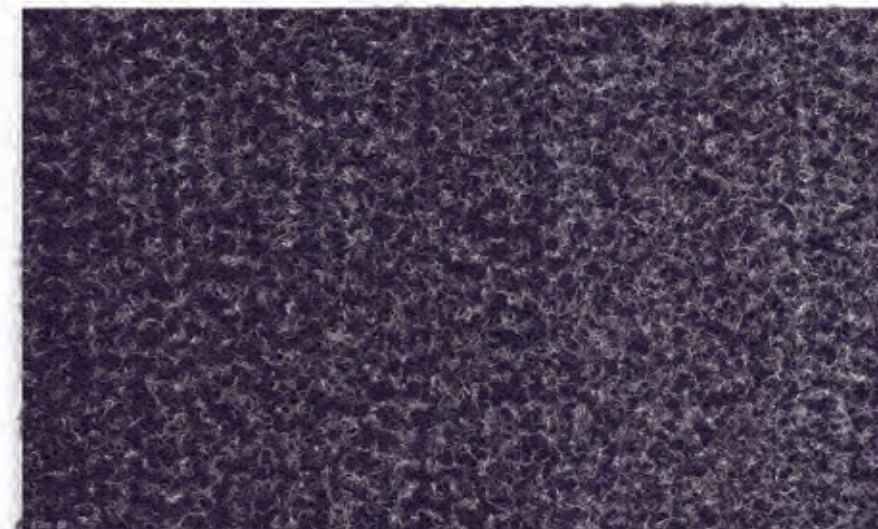
THE INSIDE STORY

It starts with transparency. Because we think you should know what's inside the products you source. How they're made. And how sustainable they really are.

PET staple fiber + PET felt /



Deconstructed Felt is constructed using up to 60% post-consumer PET for its felt primary backing. A total of 5.3 PET (0.5L) bottles are recycled to create the primary backing for a 12 inch x 48 inch carpet tile.



Dichroic is a multilayer, non-woven composite produced from recycled PET plastic. A total of 18 (0.5L) bottles are the key ingredients in each 24 inch x 24 inch tile.

Nylon 6 fiber /

What happens when you combine high performance with environmental responsibility? Our premium Nylon 6 carpet fiber, for one. With a denier per filament (DPF) of 24 and high tensile strength, it can withstand aggressive cleaning and look great for years to come. When used with EcoWorx® Tile backing, our fiber is Cradle to Cradle Certified™ Silver, a rigorous standard of sustainability.

Eco Solution Q® /

Backed by lifetime warranties for stain, colorfastness to light, static and abrasive wear. Available in 200 brilliant colors. It's the perfect blend of color, style, durability, performance and conscience.

Solution Q® Extreme /

A cationic fiber is negatively charged, giving it the power to repel acid-based stains at the molecular level. While it can withstand tough detergent, all you really need is water to keep it clean from common stains. Backed by a lifetime stain, colorfastness, light, static and abrasive wear warranty. Isn't science awesome?

EcoWorx® backing /

Totally PVC-free high performance modular and broadloom backing that's designed with materials that are safe for humans AND the environment? That's a real thing. In fact, EcoWorx® was awarded the Presidential Green Chemistry Award (2003) by the US Environmental Protection Agency (EPA) for its environmental performance benefits.

What's more, EcoWorx®-backed products are Cradle to Cradle Certified™ Silver, are NSF 140 Certified Gold (Platinum available) and can help contribute points towards the LEED® Green Building Rating System. And, thanks to our global environmental guarantee, when you're done with it, just let us know. We'll be there to pick it up and recycle it into even more EcoWorx® – at no additional cost to you.

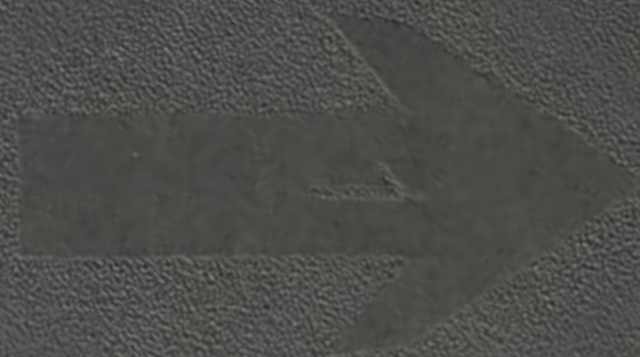


MATERIAL

Bio-based resilient /

Rapeseed and castor oil aren't just kitchen ingredients. They're also the ingredients in our recipe for PVC-free resilient flooring. Not to mention rapidly renewable resources. When we use bio-based materials, ortho-phthalate plasticizers and solvents are unnecessary. Bio-based resilient is Cradle to Cradle Certified™ Silver, has a LEED v4-contributing HPD and a LBC compliant Declare Label. That's the power of nature.





SUSTAINABILITY ISN'T A TREND

It's in our DNA and it's here to stay. We were the first manufacturer to have a Cradle to Cradle Certified™ flooring product. Nearly 90 percent of the products we manufacture are Cradle to Cradle Certified™ Silver, the highest level of sustainability. We continue to expand our commitment through ongoing relationships with many like-minded organizations, including the Cradle to Cradle Products Innovation Institute, the International WELL Building Institute and Health Product Declaration Collaborative. It's all about designing and creating better products and spaces...from the inside out.



STILL LIFE | *eco solution q nylon 6 fiber*



WELLNESS WITHIN

Spaces that promote overall health and well-being are the new normal. Flooring that evokes the feeling of being in nature, via abundant greenery. Lighting that mimics natural daylight to support circadian rhythms. Naturally breathable walls. Safe materials. We're well into the mindset with products and collections that support wellness from the inside out.

ORGANIC INTERRUPTION

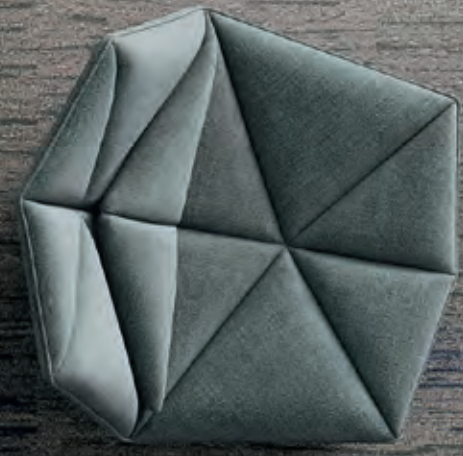
Inspired by the way nature interacts with man-made structures, Organic Interruption is a collection that embraces linear patterns disrupted by organic textures. As we explored urban surroundings, we were inspired by structures and surfaces overrun by nature. Timeworn cracks in concrete emerged with moss. Walls discolored with lichen. Sidewalks broken by with shoots of green. Using traditional block printing, we created linear patterns with organic imperfections, replicating the precision of the man-made interrupted by the abundant beauty of nature.

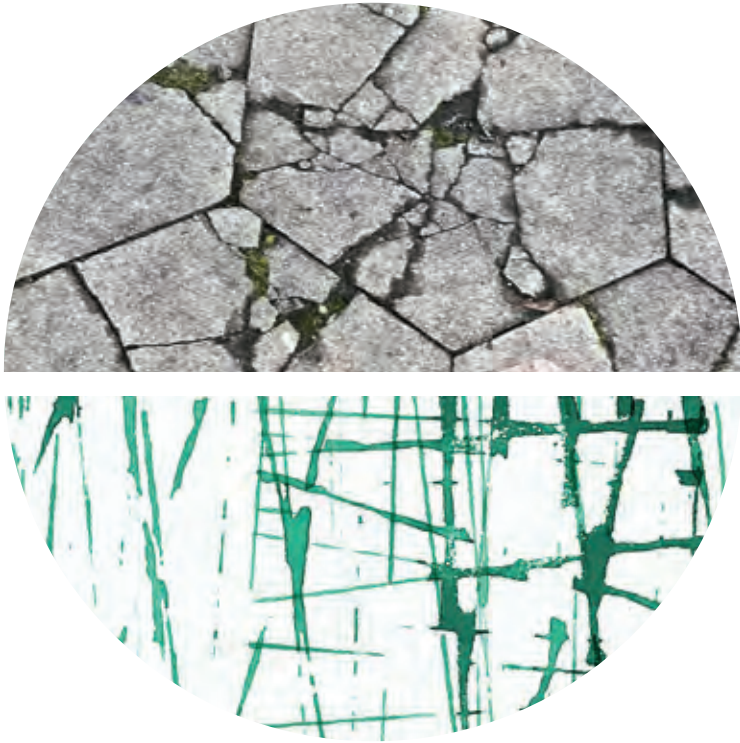


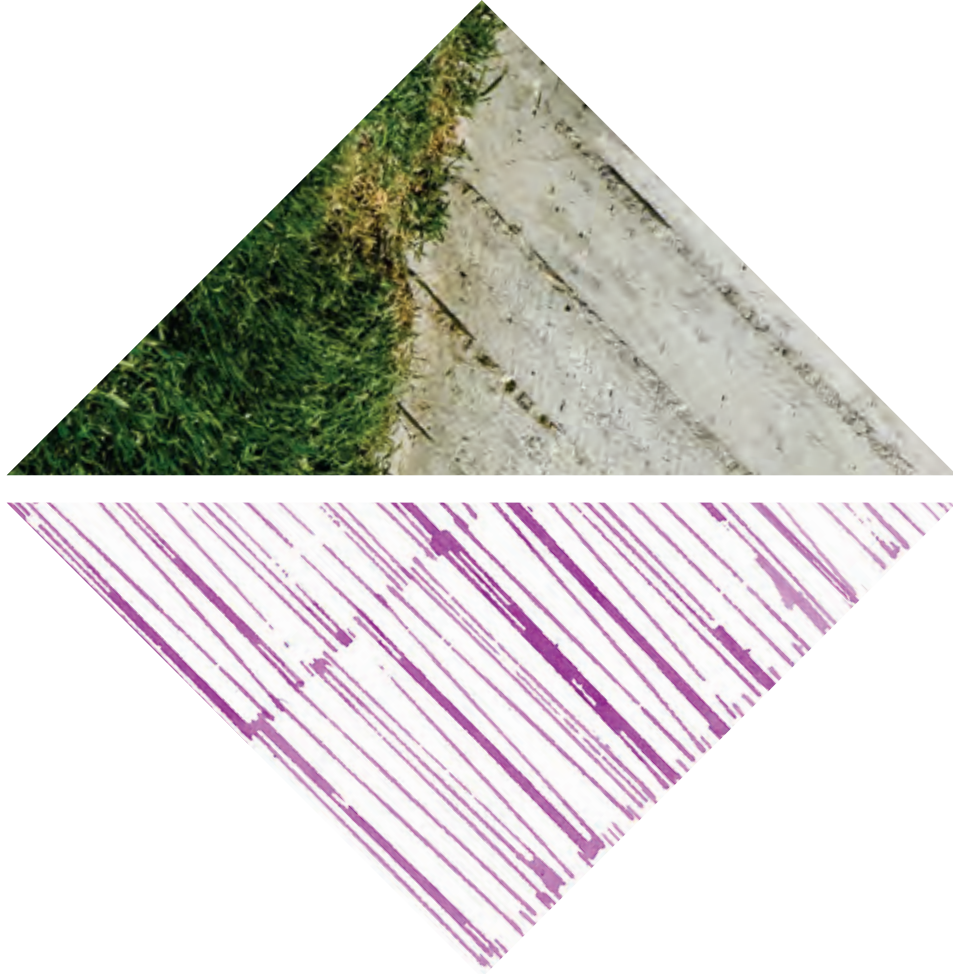


LINEAR TENSION in harbor









LINEAR TENSION in slate, violet and orchid

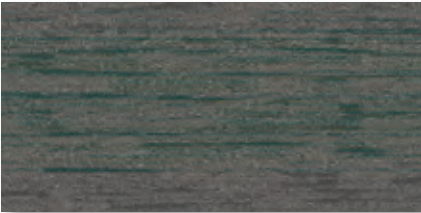
LINEAR TENSION in slate, violet and orchid



concrete 570



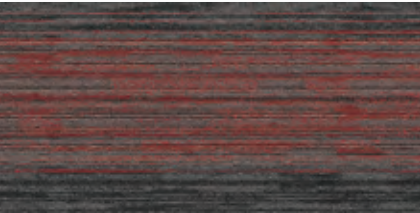
harbor 460



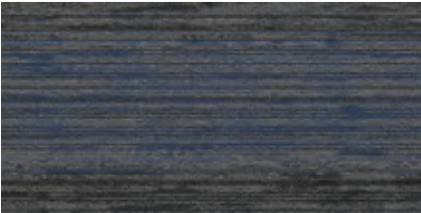
lichen 390



asphalt 590



brick 890



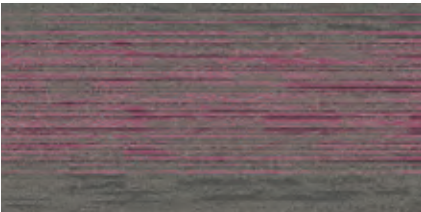
indigo 490



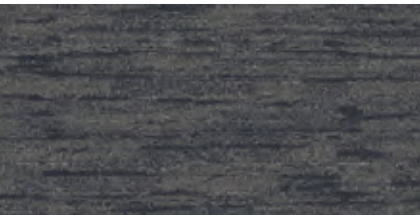
slate 550



violet 900



orchid 850



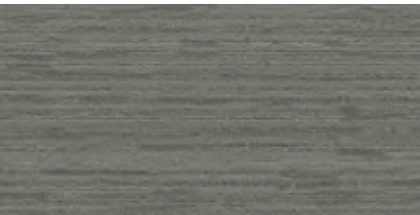
river rock 450



spring 410



lagoon 430



cobblestone 500



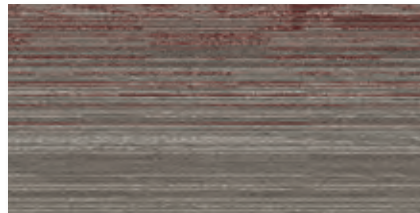
moss 350



sunbeam 250



bark 700



garnet 800



rust 680

PRODUCT SPECIFICATIONS

LINEAR TENSION

style / 10541

product size	18 in x 36 in 45.72 cm x 91.44 cm
gauge	1/12 47.24 per 10 cm
tufted yarn weight	19 oz./yd² 644.23 g/m²
stitches per inch/cm	11 43.31 per 10 cm
fiber type	Solution Q® Extreme Nylon
backing type	EcoWorx® Tile

UNDERLIE

style / 10542

product size	18 in x 36 in 45.72 cm x 91.44 cm
gauge	1/12 47.24 per 10 cm
tufted yarn weight	19 oz./yd² 644.23 g/m²
stitches per inch/cm	11 43.31 per 10 cm
fiber type	Solution Q® Extreme Nylon
backing type	EcoWorx® Tile

ENVIRONMENTAL SPECIFICATIONS

Recyclability	100% recyclable
---------------	-----------------

MATERIALS

Ingredients	does not contain PVC, phthalates, or PBD/PBDE
-------------	---

Recycled Content

total recycled content (by weight)	41%
pre-consumer	41%
post-consumer	0%
bio-based/rapidly renewable content (by weight)	0%
packaging	100% recyclable
country of origin (manufacturer)	USA

Meets or exceeds all local and national regulations in country of manufacture. Manufactured in an ISO9001 & ISO14001 certified facility or equivalent. Recycled content is calculated using system allocation, mass balance, and direct insertion. The actual recycled content in this product will likely vary.

THIRD PARTY CERTIFICATIONS

Cradle to Cradle Certified™ NSF 140 CRI Green Label Plus USGBC LEED Building Research Establishment Good Environmental Choice Australia Singapore Green Label	v3.1 Silver Gold (Platinum available) certified GLP 9968 contributes certified certified certified 039-003
---	--

DICHROIC

Merging tones and shifting shapes create sweeping gradations across a space. Ombre visuals in square and facet tiles, Dichroic mimics the textural variation of felt. But its real superpower lies within. Constructed from recycled PET bottles, Dichroic is a hybrid of soft and hard surface – with the plushness of felt and the durability of a hard surface.





DICHROIC SQUARE in granite





DICHROIC SQUARE in mineral, amber and moonstone





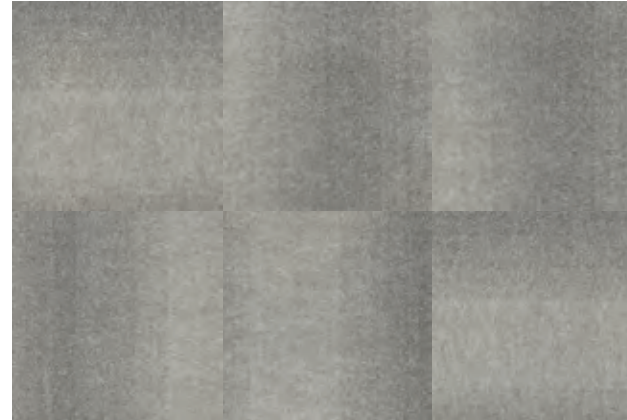


DICHOIC SQUARE in amber / **DICHOIC FACET** in amber, granite and mineral

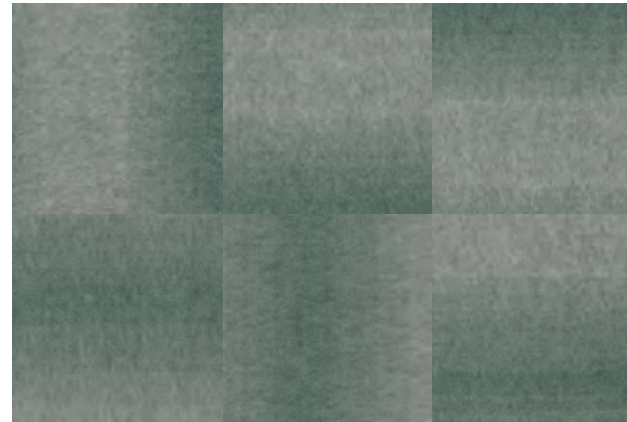
THE OMBRE EFFECT /

Each colorway in the Dichroic collection features subtle gradient shifts from tile to tile. These 6-tile grids show the textural variation and ombre effect of each color in the colorline.

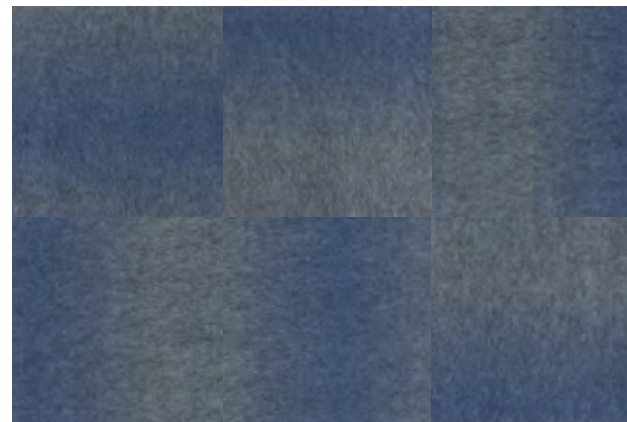
DICHOIC SQUARE 10544 / DICHOIC FACET 10545 / 6 TILE GRID



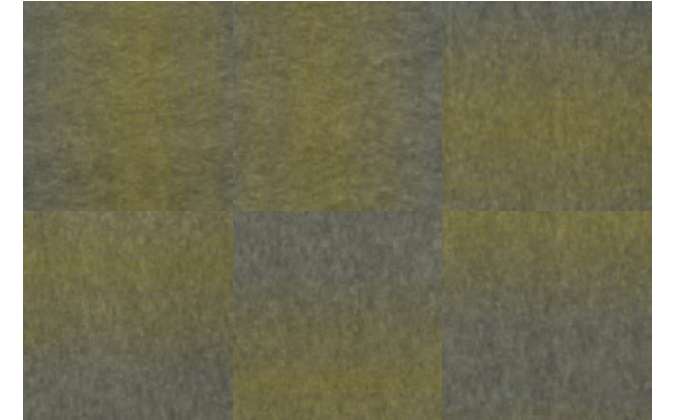
00120 granite



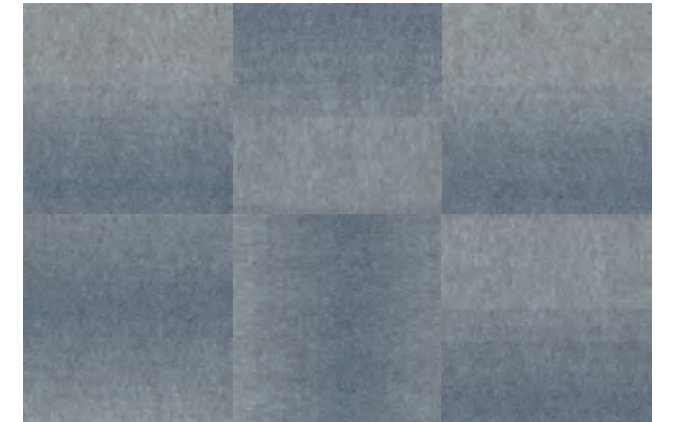
00300 emerald



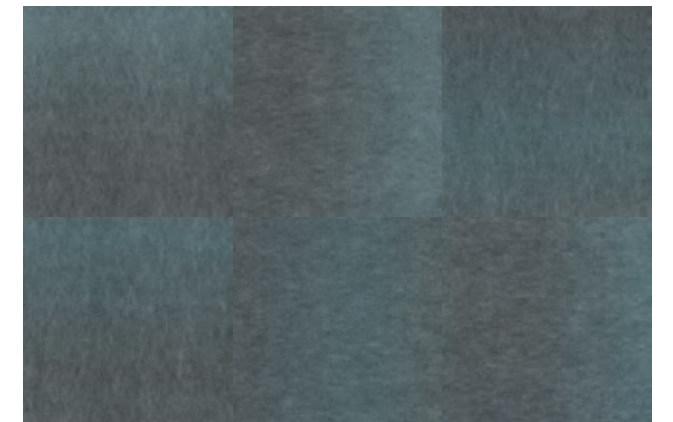
00420 sapphire



00280 topaz



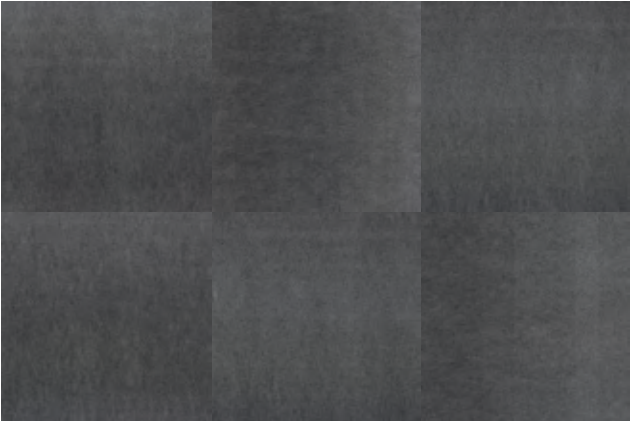
00400 moonstone



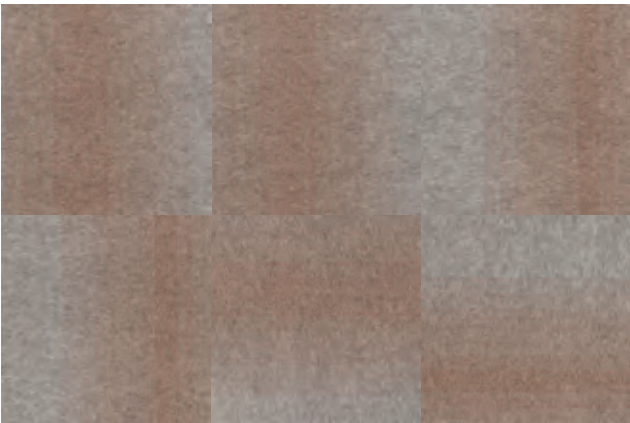
00440 aquamarine



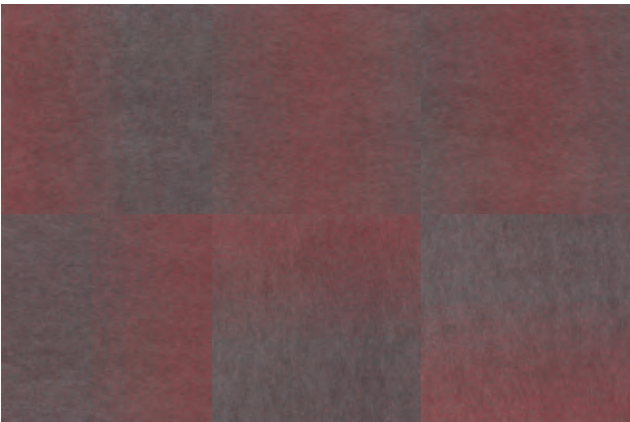
00490 cobalt



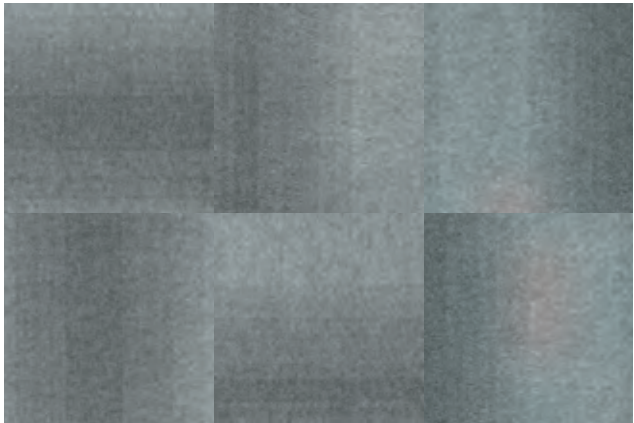
00550 nickel



00600 amber



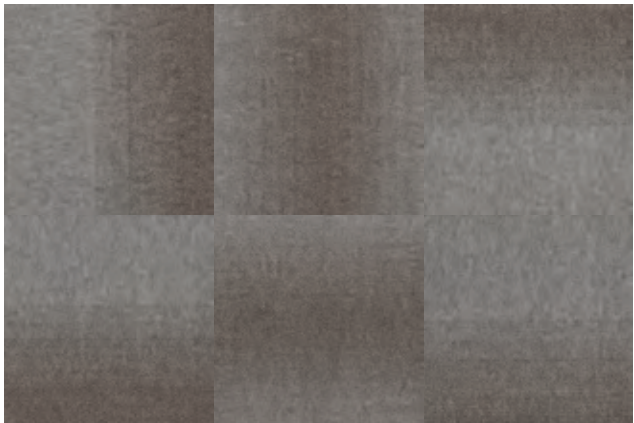
00890 ruby



00500 mineral



00580 slate



00790 agate



00900 amethyst

PRODUCT SPECIFICATIONS

DICHROIC SQUARE

style / 10544

product size	24 in x 24 in 60.96 cm x 60.96 cm
face weight	20 oz./yd² 678.14 g/m²
fiber type	PET
backing type	EcoWorx® Tile

DICHROIC FACET

style / 10545

product size	17 in x 24 in 43.18 cm x 60.96 cm
face weight	20 oz./yd² 678.14 g/m²
fiber type	PET
backing type	EcoWorx® Tile

ENVIRONMENTAL SPECIFICATIONS

Recyclability	100% recyclable
---------------	-----------------

MATERIALS

Ingredients	does not contain PVC, phthalates, or PBD/PBDE
-------------	---

Recycled Content

total recycled content (by weight)	60%
pre-consumer	44%
post-consumer	16%
bio-based/rapidly renewable content (by weight)	0%
packaging	100% recyclable
country of origin (manufacturer)	USA

Meets or exceeds all local and national regulations in country of manufacture. Manufactured in an ISO9001 & ISO14001 certified facility or equivalent. Recycled content is calculated using system allocation, mass balance, and direct insertion. The actual recycled content in this product will likely vary.

THIRD PARTY CERTIFICATIONS

Cradle to Cradle Certified™	v3.1 Bronze
NSF 140	Gold (Platinum available)
CRI Green Label Plus	certified GLP 9968
USGBC LEED	contributes
Building Research Establishment	certified
Good Environmental Choice Australia	certified
Singapore Green Label	certified 039-003

ECOSYSTEM

A PVC-free resilient collection of coordinating wood pattern plank and sheet + abstract visual tile. The abstract, soft and calming multi-directional pattern of Meaning tile was created from markings of strings dipped in watercolor. The wood visual of Enrich plank and sheet in colors that complement and coordinate with Meaning. A sophisticated blend of abstract and organic. Derived of bio-based rapidly raw material like canola, rapeseed and castor oil, this resilient flooring is free of ortho-phthalates, plasticizers and solvents.









MEANING I446V



integrate 00115



energize 00200



sustain 00300



revamp 00400



align 00450



resonate 00500



connect 00550



experience 00590

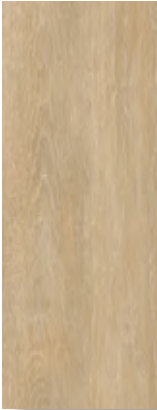


react 00700



respond 00750

ENRICH I447V



meditate 00105



soothe 00130



breathe 00250



excite 00510



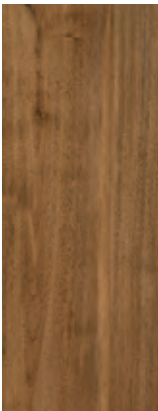
support 00560



wanter 00580



enlighten 00590



inspire 00600



restore 00650



relax 00710



comfort 00760



encourage 00790

PRODUCT SPECIFICATIONS

MEANING

style / I446V

product size	13.19 in x 26.38 in 33.5 cm x 67 cm
construction	Commercial Bio-Based Polyurethane Tile
overall thickness	.098 in 2.5 mm
finish	ExoGuard+™
installation	glue down

ENRICH PLANK

style / I447V

product size	9.84 in x 59.06 in 25 cm x 150 cm
construction	Commercial Bio-Based Polyurethane Tile
overall thickness	.098 in 2.5 mm
finish	ExoGuard+™
installation	glue down

ENRICH SHEET

style / I448V

product size	48.08 sq yd/roll 43.96 sq m/roll
construction	Commercial Bio-Based Polyurethane Heterogeneous Sheet
overall thickness	.098 in 2.5 mm
finish	ExoGuard+™
installation	glue down

ENVIRONMENTAL SPECIFICATIONS

Recyclability	not recyclable
---------------	----------------

MATERIALS

Ingredients	does not contain PVC, phthalates, or PBD/PBDE
Recycled Content	
total recycled content (by weight)	0%
pre-consumer	0%
post-consumer	0%
bio-based/rapidly renewable content (by weight)	25%
packaging	100% recyclable
country of origin (manufacturer)	Germany

Meets or exceeds all local and national regulations in country of manufacture.
Recycled content is calculated using system allocation, mass balance, and direct insertion.
The actual recycled content in this product will likely vary.

THIRD PARTY CERTIFICATIONS

Cradle to Cradle Certified™ FloorScore® GREENGUARD Gold USGBC LEED	v3.1 Silver certified certified contributes
---	--

WALK FORWARD

From entryway to the interior, Walk Forward is a flexible and functional modular offering, designed to reduce debris and dirt from entering a building. This innovative construction and soft textural visuals combine the performance of a walk-off tile with beauty of soft surface.

Walk Forward is designed to isolate and trap dirt and soil that is brought in from outside, preventing it from tracking into other areas of the building – keeping the environment cleaner and reducing the overall cost of maintenance.

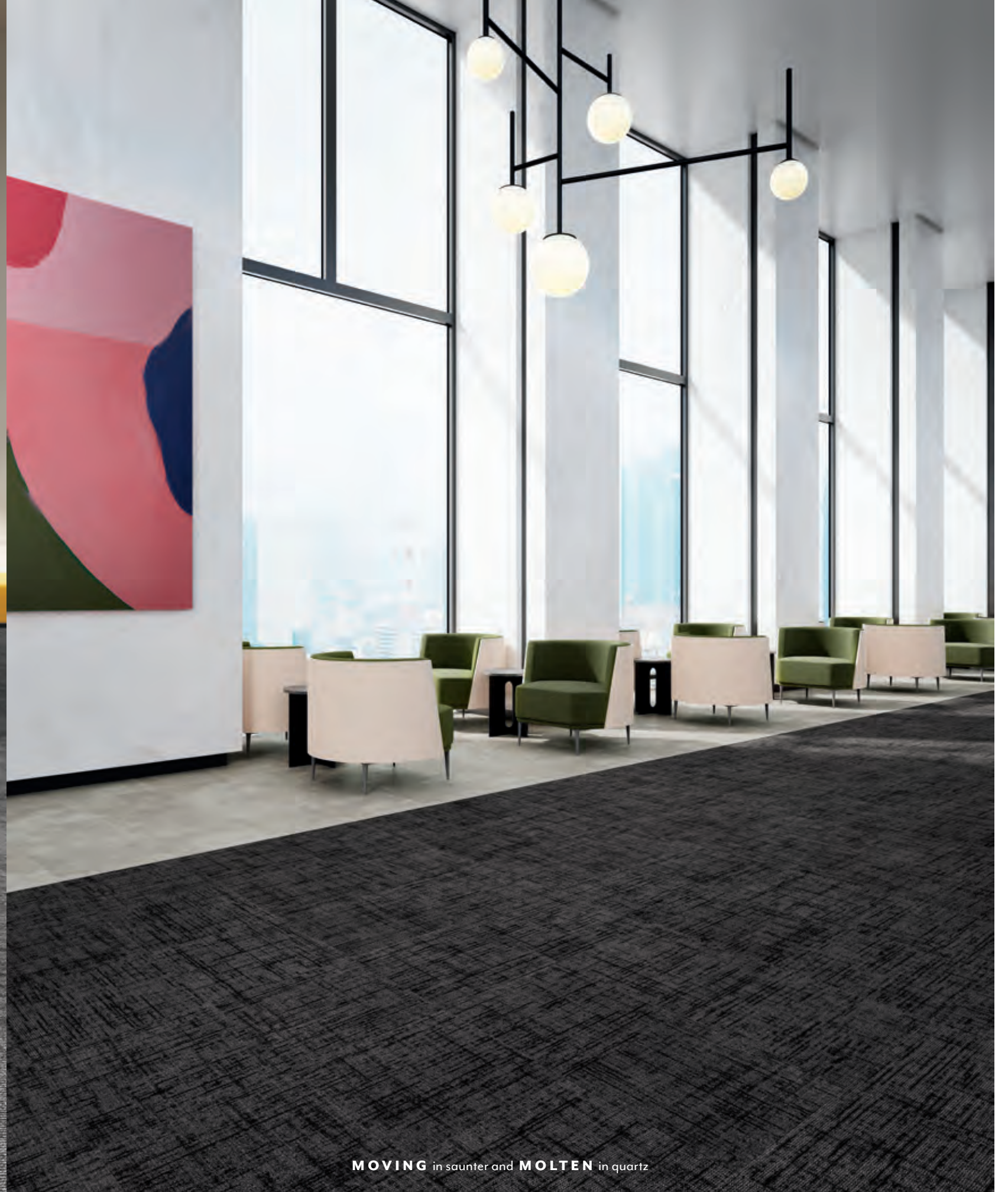




ACCESS in corridor



ACCESS in corridor and **WALK RIGHT IN II** in charcoal



MOVING in saunter and **MOLTEN** in quartz



ARRIVE in corridor and ARTCLOTH in weft





MOVING in saunter and **MOLTEN** in quartz

ACCESS 10533



passage 00500



corridor 00510

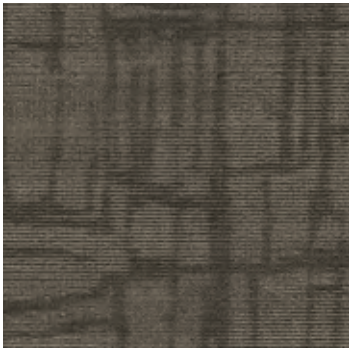


meander 00570

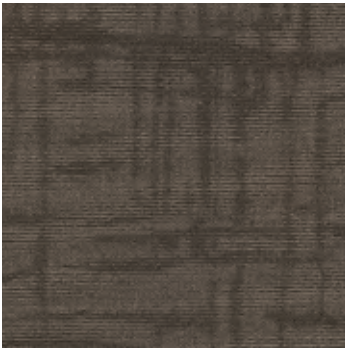


trek 00590

ARRIVE 10534



passage 00500



corridor 00510

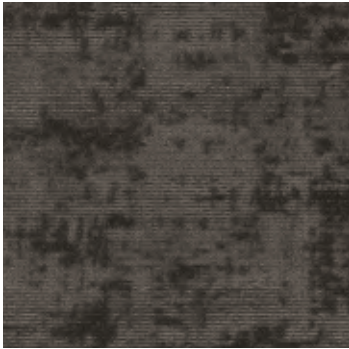


meander 00570

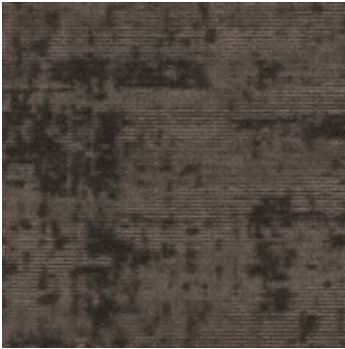


trek 00590

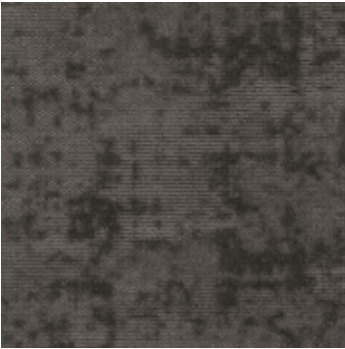
MOVING 10535



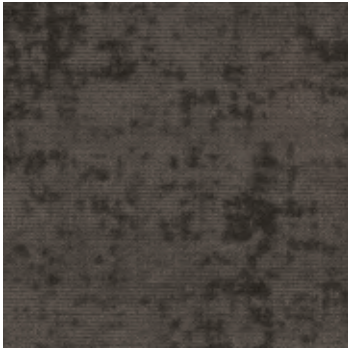
wander 00520



stroll 00540

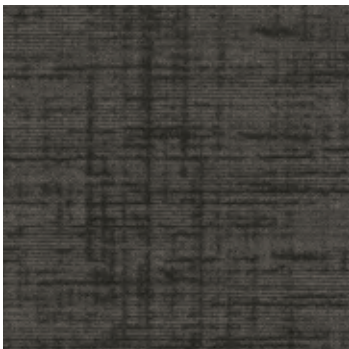


saunter 00560



pathway 00580

CONNECTING 10536



wander 00520



stroll 00540



saunter 00560



pathway 00580

PRODUCT SPECIFICATIONS

ACCESS

style / 10533

ARRIVE

style / 10534

product size	24 in x 24 in 60.96 cm x 60.96 cm
gauge	1/12 47.24 per 10 cm
tufted yarn weight	26 oz./yd² 737.09 g/m²
stitches per inch/cm	10.3 per inch 40.68 per 10 cm
fiber type	EcoSolution Q® Nylon
backing type	EcoWorx® Tile

CONNECTING

style / 10535

MOVING

style / 10536

product size	24 in x 24 in 60.96 cm x 60.96 cm
gauge	1/12 47.24 per 10 cm
tufted yarn weight	28 oz./yd² 793.79 g/m²
stitches per inch/cm	10.3 per inch 40.68 per 10 cm
fiber type	EcoSolution Q® Nylon
backing type	EcoWorx® Tile

ENVIRONMENTAL SPECIFICATIONS

Recyclability	100% recyclable
---------------	-----------------

MATERIALS

Ingredients	does not contain PVC, phthalates, or PBD/PBDE
-------------	---

Recycled Content

total recycled content (by weight)	41%
pre-consumer	41%
post-consumer	0%
bio-based/rapidly renewable content (by weight)	0%
packaging	100% recyclable
country of origin (manufacturer)	USA

Meets or exceeds all local and national regulations in country of manufacture.
Manufactured in an ISO9001 & ISO14001 certified facility or equivalent.
Recycled content is calculated using system allocation, mass balance, and direct insertion.
The actual recycled content in this product will likely vary.

THIRD PARTY CERTIFICATIONS

Cradle to Cradle Certified™ NSF I40 CRI Green Label Plus USGBC LEED Building Research Establishment Good Environmental Choice Australia Singapore Green Label	v3.1 Silver Gold (Platinum available) certified GLP 9968 contributes certified certified certified 039-003
---	--



INSPIRE. CREATE. TRANSFORM.



MIX
Paper from
responsible sources
FSC® C102271

Printed on elemental chlorine free, acid free, pH neutral paper. Read inside and out and when finished, please recycle.



patcraft®