

TRANSFORM SPACE



Reston | **R**  
RESILIENT  
PLANK

RESTON in ecru, ashen and jute / installation in stagger

LOOKBOOK

patcraft®

RESTON



**Juniper**  
2048-20

wall color by Benjamin Moore

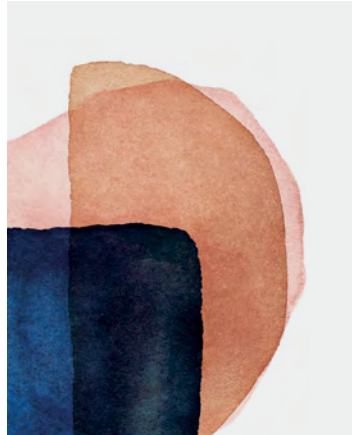


RESTON in jute / installation in stagger / with TAPIS in artisan emerald

RESTON



RESTON in carob and ashen / installation in stagger



Heirloom  
023

wall color by Benjamin Moore



RESTON

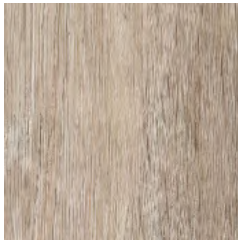


RESTON in ecru, ashen, jute and carob / installation in stagger

COLORWAYS 1588V



00710 jute



00730 anise



00720 edam



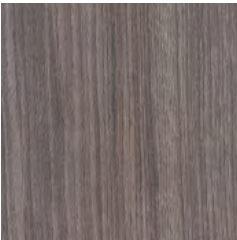
00740 ermine



00540 pika



00780 umber



00760 carob



00580 ashen



00110 ecru



00520 gull



00550 fife



00590 noir

## PRODUCT SPECIFICATIONS

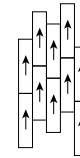
RESTON | resilient plank

style / I588V

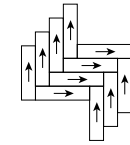
product size	7.09" x 47.24"   18 cm x 120 cm
construction	luxury vinyl tile
total thickness	.197"   5mm
wear layer	.020"   20mil (.5mm)
finish	ExoGuard™
installation	glue down

## INSTALLATION METHODS

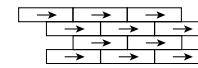
STAGGER



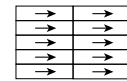
HERRINGBONE



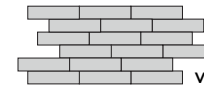
BRICK



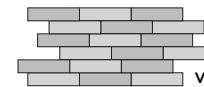
MONOLITHIC



## COLOR VARIATIONS



V1



V2



V3



V4

Shade and texture can vary slightly or significantly from piece to piece within a color. V1 shade variation has little or no change from piece to piece where a V4 will have a large variety of color and/or texture changes. **All colors in Reston are V2.**

RESTON in ashen, carob, jute and ecru /  
installation in monolithic

For full specifications and color, please [visit this style on the website.](#)