

# Walk Forward |



ACCESS / ARRIVE / CONNECTING / MOVING

CONNECTING in saunter



WALK FORWARD



ACCESS in corridor





WALK FORWARD

ARRIVE in corridor / with ARTCLOTH in left

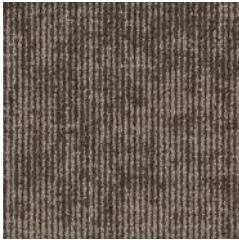




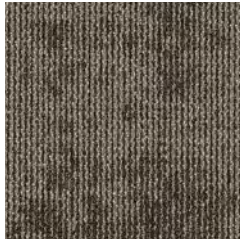
WALK FORWARD



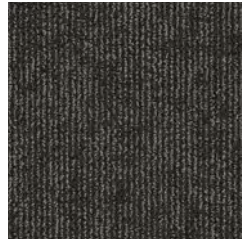
COLORWAYS 10533 | ACCESS



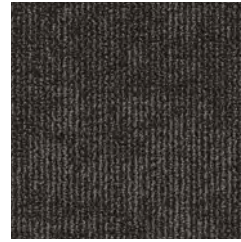
00500 passage



00510 corridor



00570 meander



00590 trek

COLORWAYS 10534 | ARRIVE



00500 passage



00510 corridor

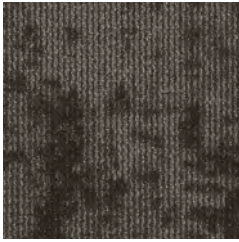


00570 meander

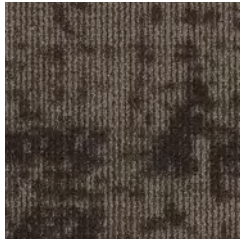


00590 trek

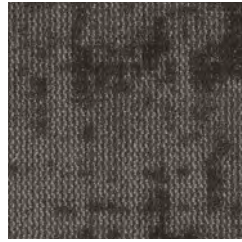
COLORWAYS 10535 | CONNECTING



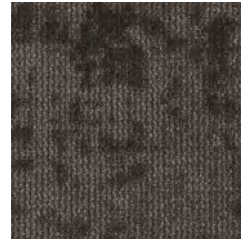
00520 wander



00540 stroll



00560 saunter



00580 pathway

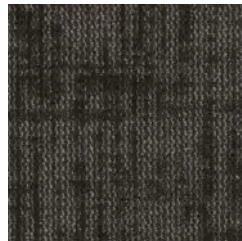
COLORWAYS 10536 | MOVING



00520 wander



00540 stroll



00560 saunter



00580 pathway



## PRODUCT SPECIFICATIONS

### WALK FORWARD | modular

#### ACCESS

style / I0533

product size  
tufted yarn weight  
stitches per inch  
fiber type  
backing type

#### ARRIVE

style / I0534

24" x 24" | 60.96 cm x 60.96 cm  
26 oz  
10.3 per inch | 40.68 per 10 cm  
EcoSolution Q® Nylon  
EcoWorx® Tile

#### CONNECTING

style / I0535

product size  
gauge  
tufted yarn weight  
stitches per inch  
fiber type  
backing type

#### MOVING

style / I0536

24" x 24" | 60.96 cm x 60.96 cm  
1/12  
28 oz  
10.3 per inch | 40.68 per 10 cm  
EcoSolution Q® Nylon  
EcoWorx® Tile

## INSTALLATION METHODS



monolithic



quarter turn



ashlar



brick



random

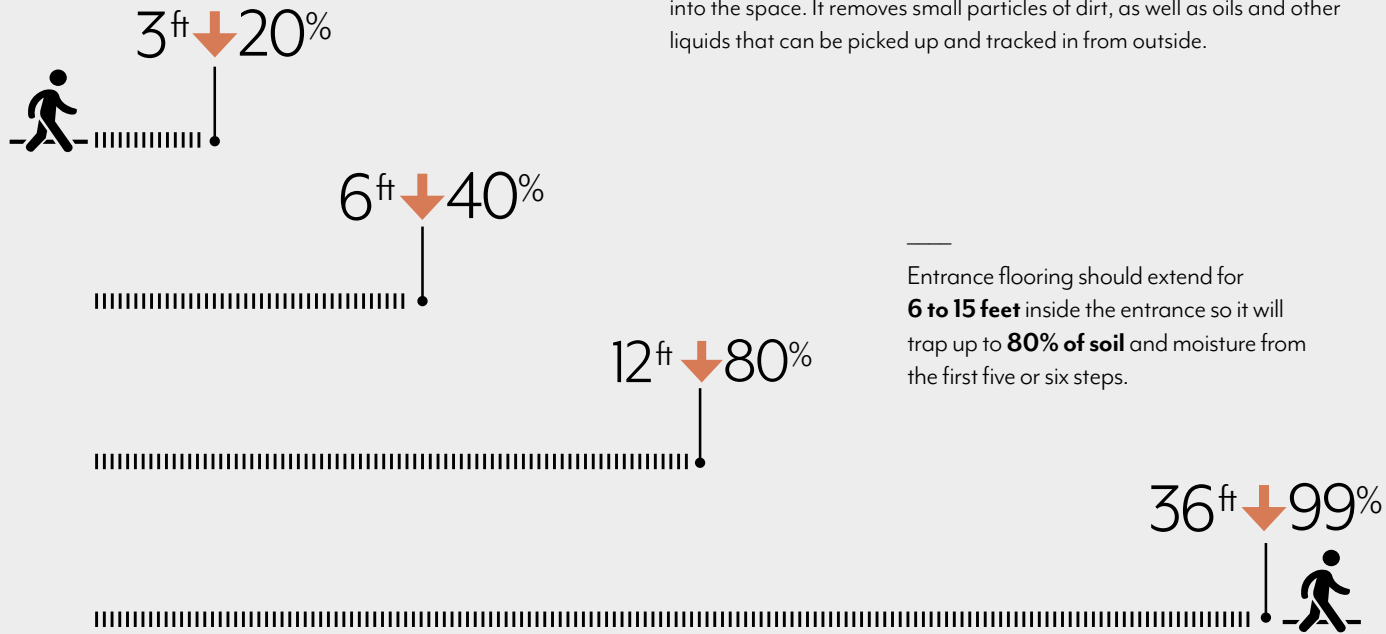
MOVING in saunter / with MOLTEN in quartz

For full specifications and color, please [visit this collection on the website.](#)





A COST REDUCING MAINTENANCE PROGRAM STARTS WITH PREVENTION. ISOLATING AND CONTAINING DIRT AND SOIL AT THE ENTRY POINTS PREVENTS IT FROM TRACKING INTO OTHER AREAS OF THE BUILDING.



**BY THE NUMBERS**

A study by the International Sanitary Supply Association (ISSA) showed 1,000 people in 20 days can track in 24 pounds of soil into a space. The cost to remove one pound of soil from your facility is approximately \$700.

ENTRY FLOORING /	None	3ft	6ft	12ft
SOIL TRACKED INDOORS /	24 lbs	19.2 lbs	14.4 lbs	4.8 lbs
SOIL REMOVAL COST /	\$16,800	\$13,440	\$10,080	\$3,360