



Metal Collective |



MOLTEN / OXIDIZED

MOLTEN in alabaster and granite

METAL COLLECTIVE

RESILIENT TILE / 24 X 24

SCARS
TELL A
STORY

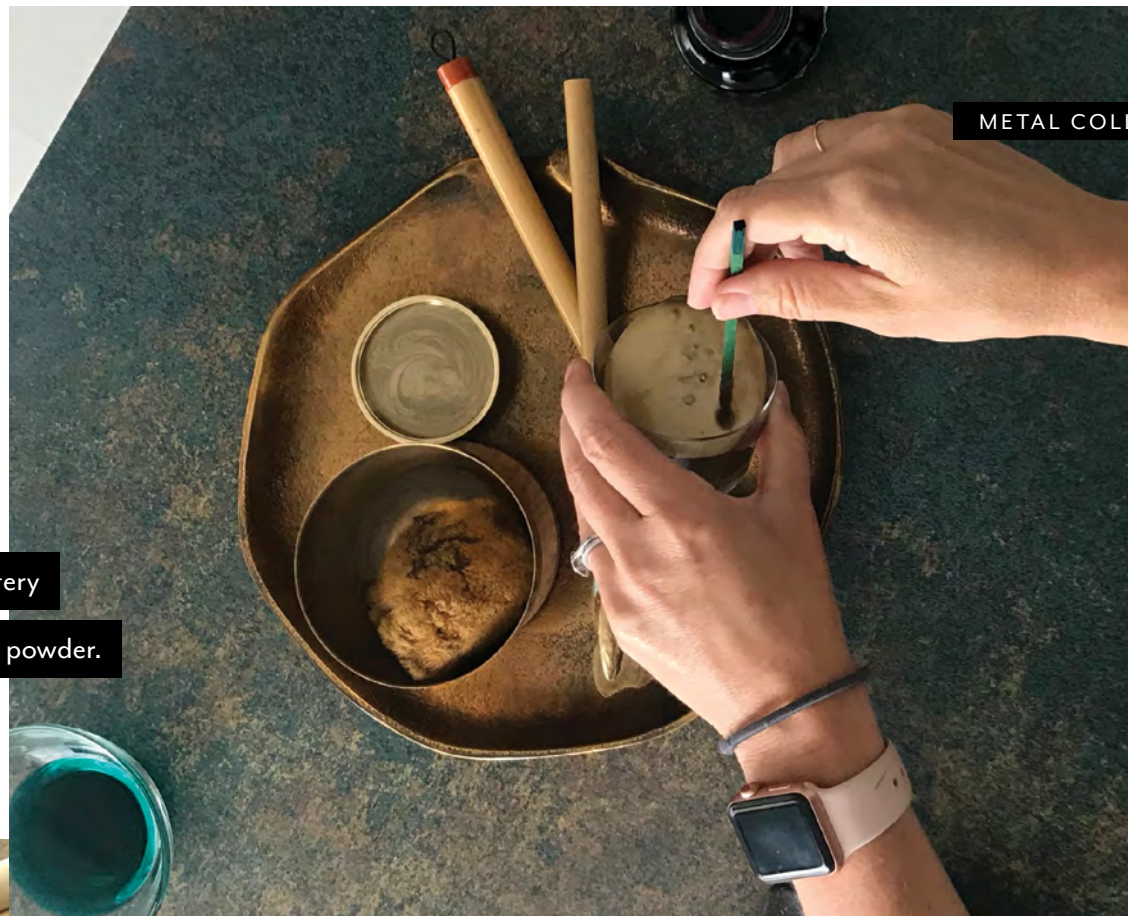


BREAK

There is beauty in the breakage.

Inspired by the art of Japanese kintsugi, where broken pottery is put back together with lacquer and dusted with metallic powder.

Because scars make better stories.



WHAT'S BROKEN COMES TOGETHER IN A NEW AND BEAUTIFUL WAY. HARD SURFACE LVT WITH METALLIC FLECKS AND VEINS IS A TESTAMENT TO THE HISTORY OF CRAFT, AND ITS POTENTIAL FOR THE FUTURE.



STILL LIFE / *flaws in light and in shadow*



METAL COLLECTIVE

METAL COLLECTIVE



MOLTEN in alabaster

METAL COLLECTIVE



OXIDIZED in travertine



OXIDIZED in turquoise and ore / MOLTEN in alabaster



V1



V2



V3



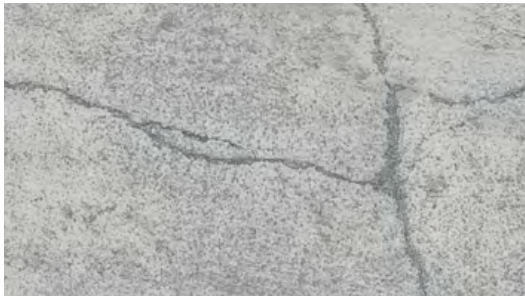
V4

Shade and texture can vary slightly or significantly from piece to piece within a color. V1 shade variation has little or no change from piece to piece where a V4 will have a large variety of color and /or texture changes. Prior to any installation, a range of tiles should be approved by the customer on V3 and V4 colors.

METALLIC INKS

Each color in Metal Collective features metallic ink. The metallic color or colors used is indicated in the right corner under each image. Images shown represent the application of the metallic ink, however physical samples should be used for true metallic visual effects. Metallic ink will appear in every tile.

MOLTEN I478V



00500 Calcite metallic ink / silver



00100 Alabaster metallic ink / gold



00560 Granite metallic ink / bronze



00520 Quartz metallic ink / bronze



00580 Obsidian metallic ink / silver



00780 Brownstone metallic ink / gold



00540 Shale metallic ink / gold

PRODUCT SPECIFICATIONS

METAL COLLECTIVE | modular

MOLTEN

style / I478V

product size / 23.62" x 23.62" | 60 cm x 60 cm

OXIDIZED

style / I479V

product size / 23.62" x 23.62" | 60 cm x 60 cm

construction / luxury vinyl tile

wear layer / thickness 20 MIL (.020" | .5 MM)

total thickness / .197" | 5 MM

finish / EXOGUARD™

installation / glue down

INSTALLATION METHODS



monolithic



quarter turn



ashlar



brick



random

For full specifications and color, please
[visit this collection on the website.](#)

METALLIC INKS

Each color in Metal Collective features metallic ink. The metallic color or colors used is indicated in the right corner under each image. Images shown represent the application of the metallic ink, however physical samples should be used for true metallic visual effects. Metallic ink will appear in every tile.

OXIDIZED I479V



00530 Sandstone

metallic ink / bronze & silver



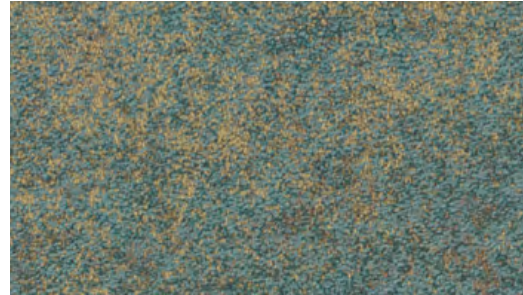
00130 Travertine

metallic ink / bronze & silver



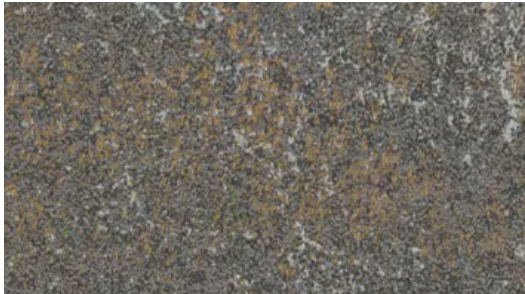
00730 Boulder

metallic ink / gold & silver



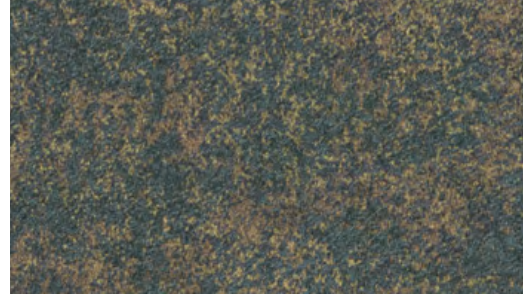
00390 Turquoise

metallic ink / bronze & gold



00770 Basalt

metallic ink / bronze & silver



00490 Sapphire

metallic ink / bronze & gold



00550 Ore

metallic ink / bronze & silver

PRODUCT SPECIFICATIONS

METAL COLLECTIVE | modular

MOLTEN

style / I478V

product size / 23.62" x 23.62" | 60 cm x 60 cm

OXIDIZED

style / I479V

product size / 23.62" x 23.62" | 60 cm x 60 cm

construction / luxury vinyl tile

wear layer / thickness 20 MIL (.020" | .5 MM)

total thickness / .197" | 5 MM

finish / EXOGUARD™

installation / glue down

INSTALLATION METHODS



monolithic



quarter turn



ashlar



brick



random

For full specifications and color, please
[visit this collection on the website.](#)