

# Set In Concrete

**R**  
RESILIENT  
TILE



**DISSIPATE**  
style I334V

**STORM**  
color 00570

patcraft®

Patcraft's resilient tile flooring is engineered for high demand environments. Manufactured using high performance raw materials, Set In Concrete is created to offer unparalleled strength and durability for end use installations. Durability, wear retention, longevity and many other performance requirements drive Patcraft product design so you know when you specify Patcraft, you specify performance.

**because flooring matters.**

# Set In Concrete

## Features and Benefits

- High performance resilient designed for high demand environments.
- ExoGuard™ Quartz Enhanced Urethane finish and 20 mil wear layer ensures performance in a variety of high demand commercial applications.
- 10 year limited commercial wear warranty, and unmatched 10 year underbed warranty when installed with Shaw 4100 or S150 adhesive.
- Extreme durability (2000 psi) allows for occupation with no polish required.
- High performance matte finish is polish and buff optional for hassle free maintenance.
- FloorScore® certified for low VOCs.
- Recommended Applications: High performance, high traffic end use applications including higher education, K-12, corporate, retail, healthcare and assisted living.

## Product Specifications

Construction	LVT
Wear Layer Thickness	20 mil / .020" (0.5 mm)
Overall Thickness	.098" (2.5 mm)
Reference Specification	Class III printed film vinyl tile
ASTM 1700	Type B (embossed)
Finish	ExoGuard™ Quartz Enhanced Urethane
Installation	Glue Down
Recommended Adhesive	Shaw 4100 or S150

## Packaging

Tile Size	23 5/8" x 23 5/8" (60 cm x 60 cm)
Pieces/Box	12
Sq. Ft./Box	46.5
Weight (Lb./Box)	39.99
Weight (Lb./Sq. Ft.)	0.86

## Warranty

10 year limited commercial wear warranty, 10 year underbed warranty when installed with Shaw 4100 or S150 adhesive. Please visit [patcraft.com](http://patcraft.com) for the most current warranty information

## Performance Testing

Slip Resistance / ASTM D 2047	ADA compliant
Static Load / ASTM F 970	2000 psi (lbs/sq in) – 0.005 in.
Residual Indentation / ASTM F1914	Passes <8%
Flexibility / ASTM F 137	Passes
Resistance to Heat / ASTM F 1514	Passes
Resistance to Light / ASTM F 1515	Passes
Resistance to Chemicals / ASTM F 925	Passes
Resistance to Fungi / ASTM G21	Passes
Antibacterial Activity / AATCC 147	Passes
Radiant Flux / ASTM E 648	>0.45 watts/cm <sup>2</sup> , NFPA Class I
Smoke Density / ASTM E 662	<450, Passes
Dimensional Stability / ASTM F2199	Passes

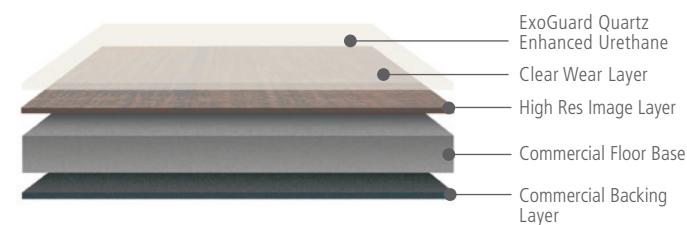
## Environmental

Indoor Air Quality FloorScore® certified

## Maintenance

Patcraft resilient products do not always require a floor finish. However, in certain applications a floor finish may be desirable to aid in stain resistance, resistance to abrasion or increase gloss level.

## Construction

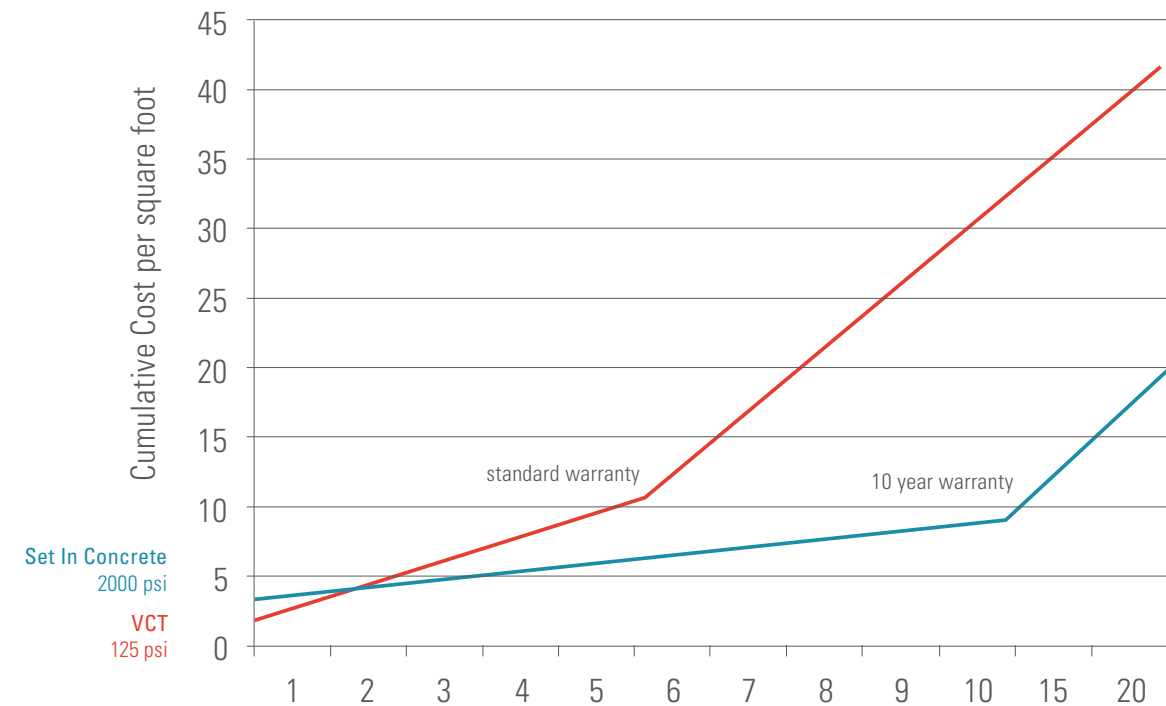


## Installation

(see [patcraft.com](http://patcraft.com) for complete installation instructions)

- Flooring material and adhesive must be acclimated to the installation area for a minimum of 48 hours prior to installation.
- Ensure that moisture tests have been conducted and that results do not exceed 7.0 lbs per 1000 sf in 24 hours as per ASTM F-1869, (87% when using Shaw 4100 or 90% when using Shaw S150) In-Situ relative humidity when tested according to ASTM F-2170.
- pH of concrete sub-floor must not exceed 10.
- Patcraft LVT is installed using conventional tile installation techniques.
- Use Shaw S150 spray adhesive or Shaw 4100 and a 1/32" x 1/16" x 1/32" U-notch trowel to permanently install resilient flooring.
- In most cases, the tile should be immediately placed into the adhesive, before the adhesive has had an opportunity to dry. Good transfer of adhesive to the backing of the tile is essential for proper bond.
- Material should always be visually inspected prior to installation. Any material installed with visual defects will not be considered a legitimate claim as it pertains to labor costs.

## Life Cycle Cost (national average)



Patcraft resilient products can cost nearly 50% less than typical VCT (or any product requiring polish) over the life of the floor.

This chart uses a national average for pricing and maintenance expenses to illustrate cost savings. To compare the lifecycle costs of products based on pricing in your area visit [patcraft.com](http://patcraft.com)



# Colorways



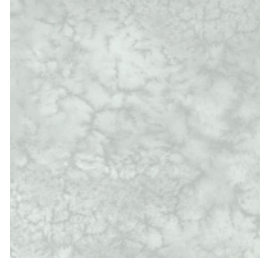
**SPRING**  
00110



**PUDDLE**  
00100

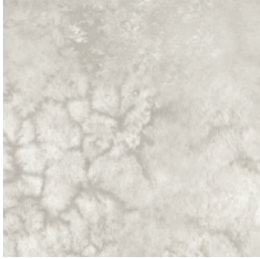


**SALTWATER**  
00500



**POND**  
00525

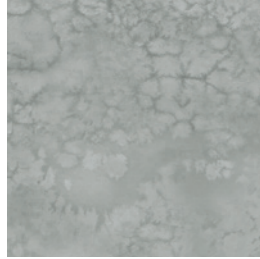
**DISSIPATE**  
I334V



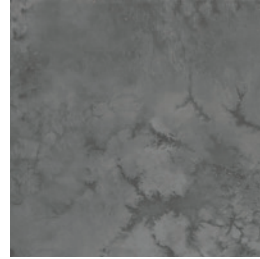
**MARSH**  
00515



**PEAT**  
00725



**LAKE**  
00560



**STORM**  
00570



**CLAST**  
00565



**FRAGMENT**  
00550



**SEDIMENT**  
00790



**BEDROCK**  
00580

**AGGREGATE**  
I333V



**FOSSIL**  
00505



**CLAY**  
00140



**PEBBLE**  
00530



**PUTTY**  
00730